

WEST BRANCH COMMUNITY SCHOOLS

SIAC Meeting
Elementary Library

Monday, March 30, 2015
6:30 p.m.

Those present at this meeting included:

Kevin Hatfield, Superintendent
Shannon Bucknell, High School Principal
Sara Oswald, Middle School Principal/Director of Curriculum, Instruction & Innovation
Jessica Burger, Elementary School Principal
Richard Paulus, Board Member
Lacey Becker, Teacher
Carolyn Harold, Kevin Olson, Laura Gongora

Welcome: Welcome by Mr. Hatfield and introductions of participants.

SIAC Overview: Mr. Hatfield gave a summary of January 26, 2015 SIAC work. Mr. Hatfield provided a review of the SIAC core values and noted that the district's strategic plan is driven by the transformational process. Mr. Hatfield also shared that the district was holding a professional development day on April 6th about anti-bullying/harassment with guest speaker Amanda Easton and the elementary building has started the Leader in Me program.

Iowa Assessment Trends and Achievement Targets: The district's Iowa Core Summary Report for 2013-2014 was presented (see attached). The summary provided student achievement information the district on the *Iowa Assessments* for the 2013-2014 school year. The district's Reading: Percent Proficient by Grade scores surpass the State and AEA scores for grades 7-12, while the district's Mathematics: Percent Proficient by Grade scores surpass the State and AEA scores for grades 5-12. Committee member Carolyn Harold asked what was the ultimate goal of the numbers. Mr. Hatfield responded that the district would be able to direct the help needed to the areas that were not meeting the target.

Building Achievement Reports: Building principals presented District Achievement and Building Climate Improvement Targets (see attached).

Graduation Rate/Dropout Report: Mr. Hatfield presented the district's graduation and dropout rates for the 2013-2014 school year. The 2014 graduation rate is 88.57% and the 2014 dropout rate is 1.20%. It is important to note that because the district is small, a slight change in reporting figures will have a significant impact on district rates.

District Surveying Results:

Technology: The district conducted the WBCSD Clarity/Bright Bytes Survey Infographics on February 2015. The results are attached.

Next Level of Work: The next steps for WBCSD include:

- Differentiating professional development according to ability
- Establishing a common language re: digital citizenship district-wide
- Increasing availability of personal devices at elementary level

Next Meeting – Next meeting is yet to be determined.



Iowa Core Summary Report 2013-2014

West Branch
(6930)



Overview

This summary provides student achievement information for your district on the *Iowa Assessments* for the 2013-2014 school year.

- **Growth** results show progress of students across grades and compares your students with those in your AEA region and state.
- **Proficiency** results show the performance of grade groups and compares your students to the AEA region and state.
- **Iowa Core** results show how your students perform on major domains of the Iowa Core in Reading and Mathematics.

Figure 1
Reading: Average NSS by Grade
West Branch: 2013-2014

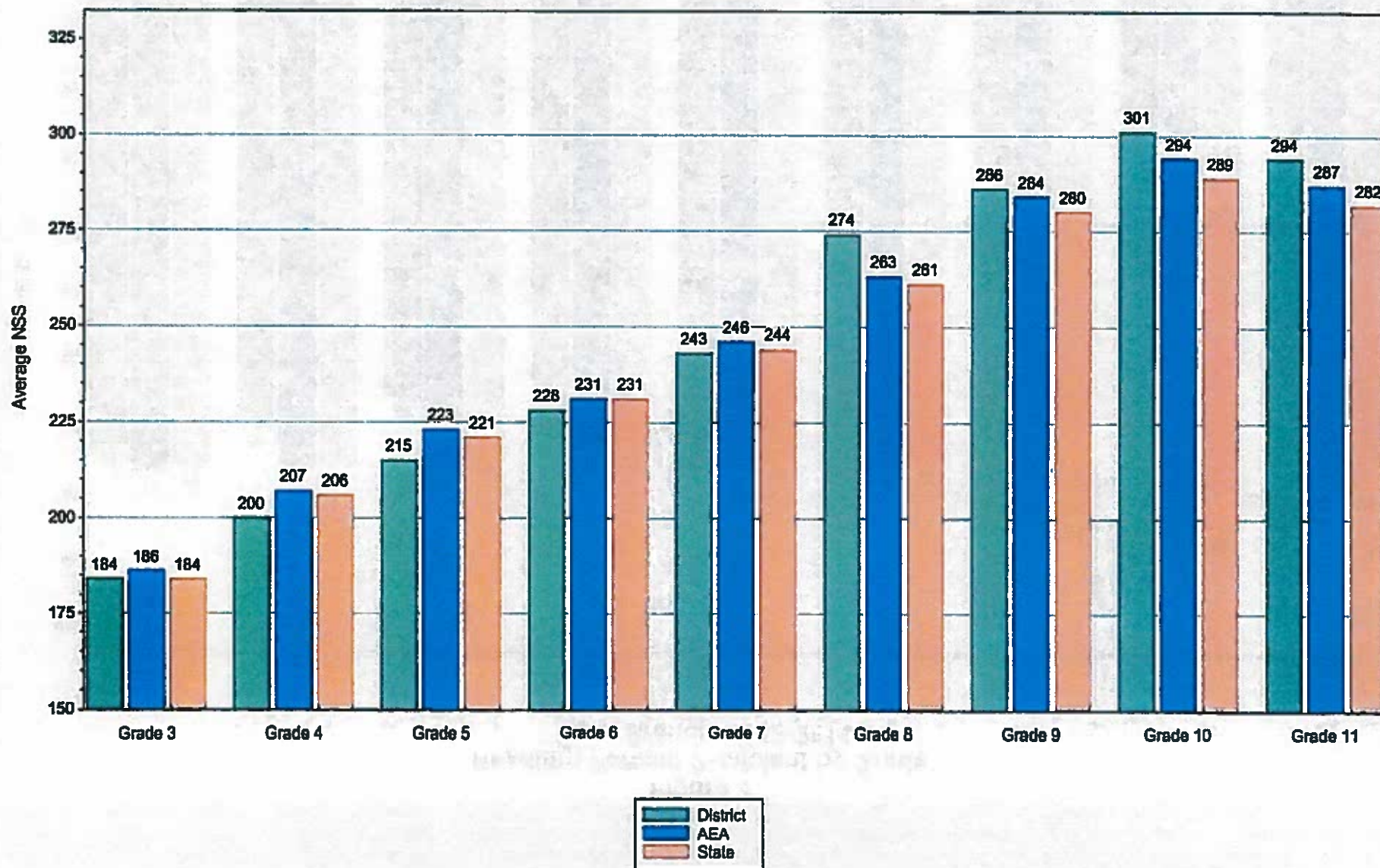


Figure 2
Reading: Percent Proficient by Grade
West Branch: 2013-2014

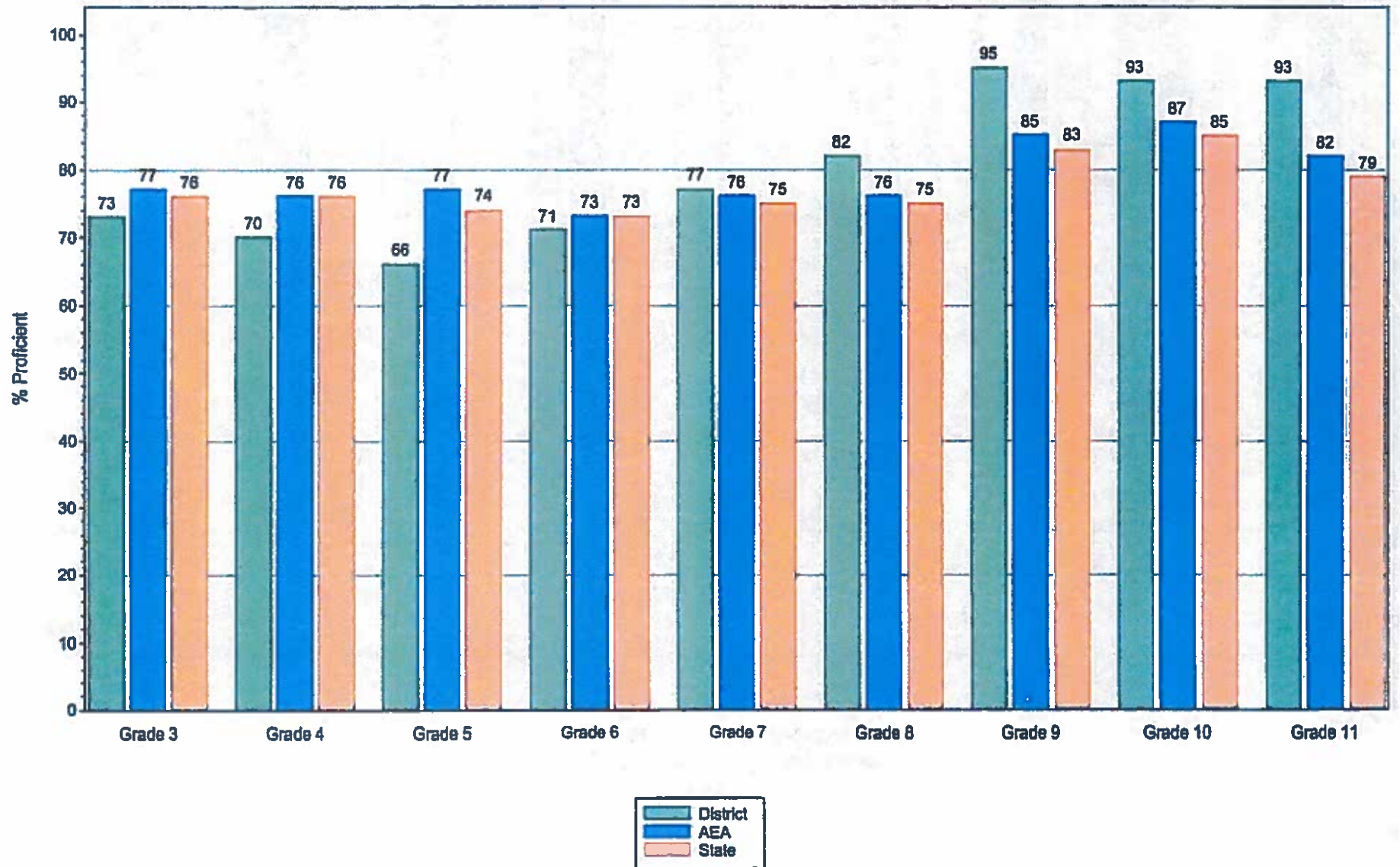


Figure 3
Mathematics: Average NSS by Grade
West Branch: 2013-2014

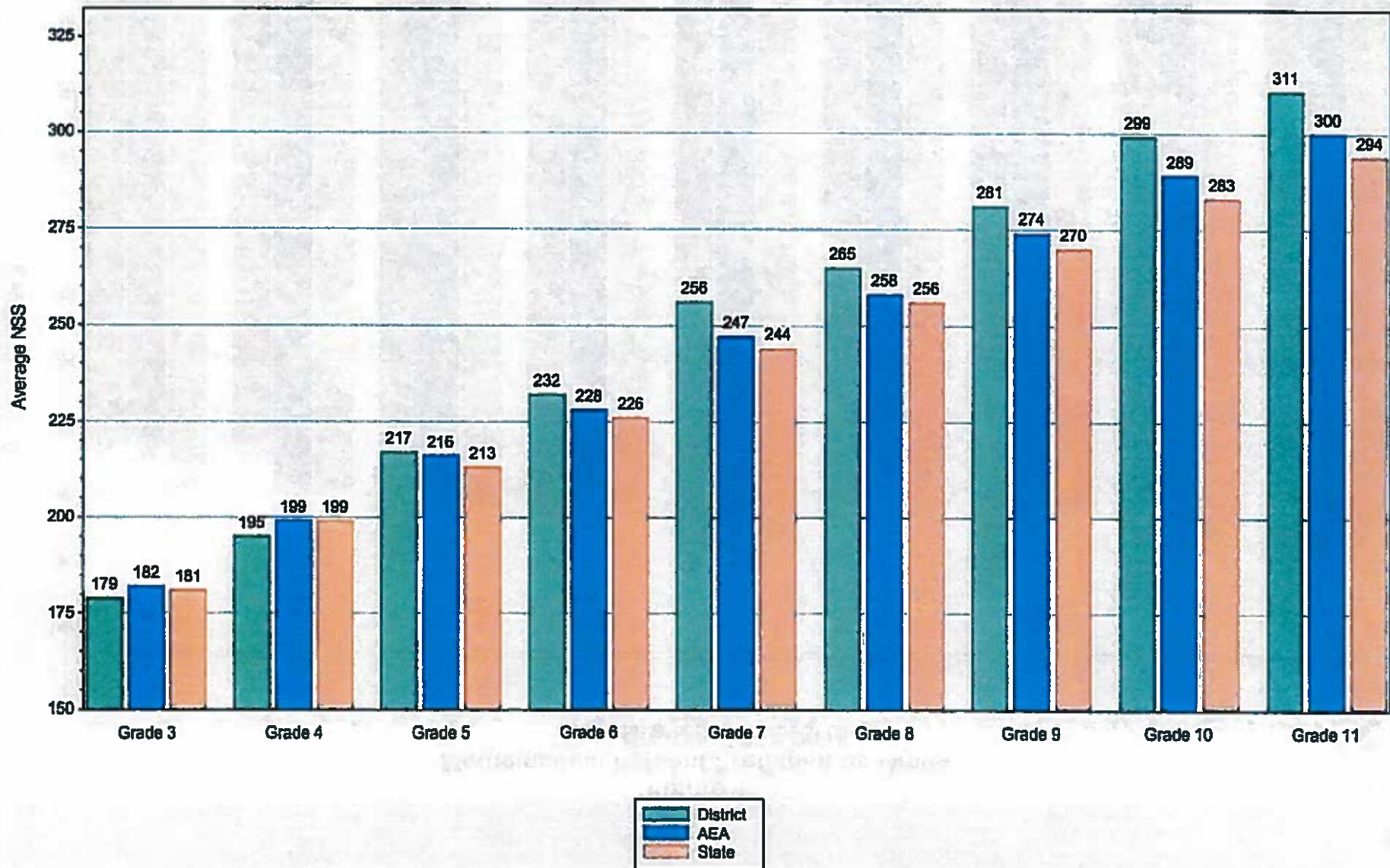


Figure 4
Mathematics: Percent Proficient by Grade
West Branch: 2013-2014

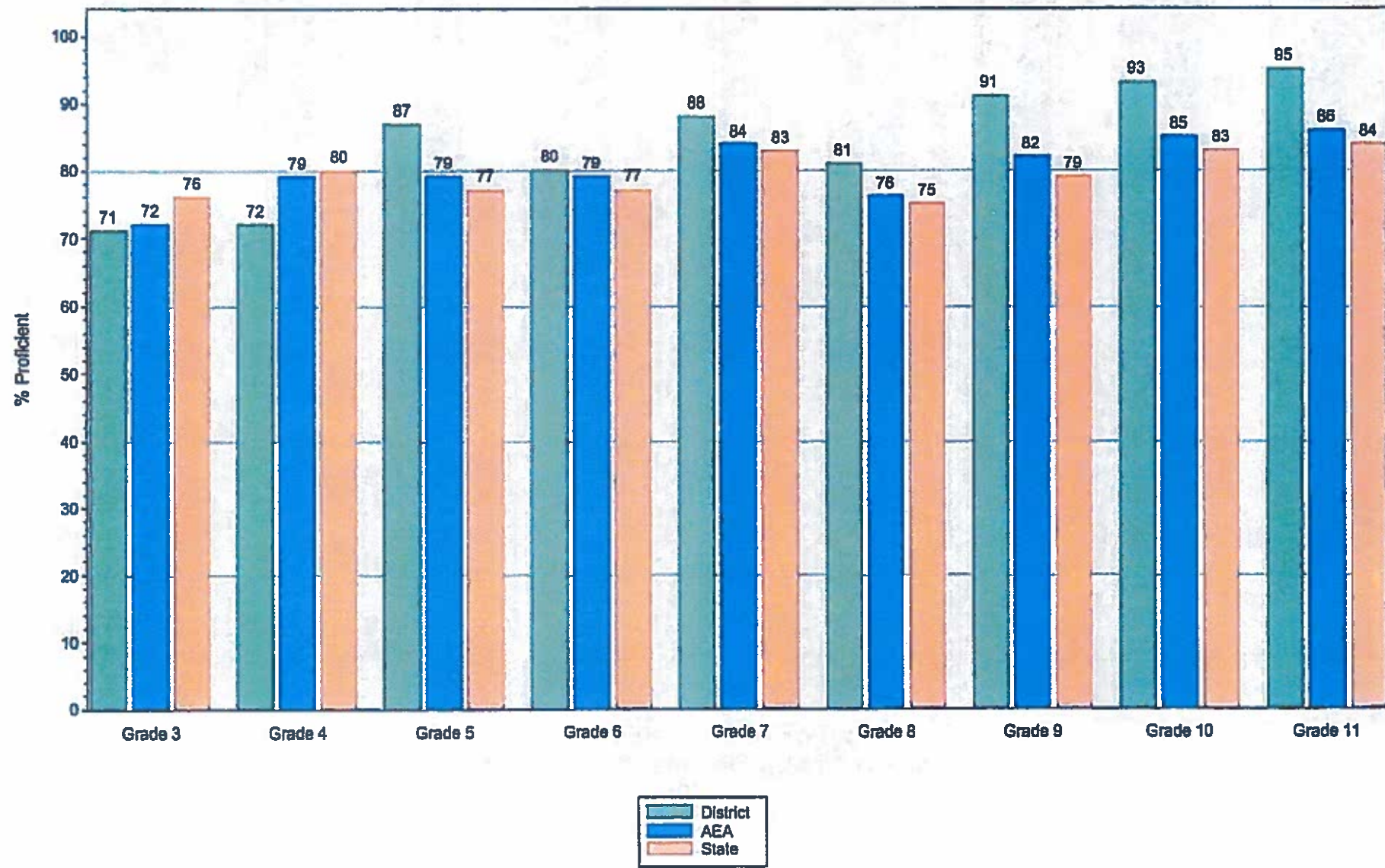


Table 1
Domain Performance in Reading on the Iowa Core: Grades 3-8
West Branch: 2013-2014

Iowa Core: Reading									
Grade 3 (n=56)					Grade 4 (n=53)				
Domain	# of Points	Percent Correct			Domain	# of Points	Percent Correct		
		District	AEA	Iowa			District	AEA	Iowa
Key Ideas & Details	28	62%	69%	68%	Key Ideas & Details	26	61%	68%	68%
Craft & Structure	11	57%	61%	60%	Craft & Structure	12	56%	66%	66%
Integration of Knowledge & Ideas	02	66%	71%	71%	Integration of Knowledge & Ideas	04	58%	64%	64%
Total	41				Total	42			
Grade 5 (n=70)					Grade 6 (n=59)				
Domain	# of Points	Percent Correct			Domain	# of Points	Percent Correct		
		District	AEA	Iowa			District	AEA	Iowa
Key Ideas & Details	24	61%	68%	65%	Key Ideas & Details	25	64%	68%	67%
Craft & Structure	15	60%	69%	66%	Craft & Structure	16	65%	68%	68%
Integration of Knowledge & Ideas	04	55%	66%	63%	Integration of Knowledge & Ideas	03	51%	57%	56%
Total	43				Total	44			
Grade 7 (n=65)					Grade 8 (n=67)				
Domain	# of Points	Percent Correct			Domain	# of Points	Percent Correct		
		District	AEA	Iowa			District	AEA	Iowa
Key Ideas & Details	27	64%	67%	66%	Key Ideas & Details	27	72%	69%	69%
Craft & Structure	14	64%	67%	66%	Craft & Structure	15	72%	67%	67%
Integration of Knowledge & Ideas	04	60%	61%	58%	Integration of Knowledge & Ideas	04	78%	73%	72%
Total	45				Total	46			

Table 2
Domain Performance in Reading on the Iowa Core: Grades 9-11
West Branch: 2013-2014

<i>Iowa Core: Reading</i>									
<i>Grade 9 (n=55)</i>					<i>Grade 10 (n=57)</i>				
<i>Domain</i>	<i># of Points</i>	<i>Percent Correct</i>			<i>Domain</i>	<i># of Points</i>	<i>Percent Correct</i>		
		<i>District</i>	<i>AEA</i>	<i>Iowa</i>			<i>District</i>	<i>AEA</i>	<i>Iowa</i>
Key Ideas & Details	21	69%	68%	67%	Key Ideas & Details	23	67%	66%	63%
Craft & Structure	16	68%	68%	66%	Craft & Structure	13	75%	72%	69%
Integration of Knowledge & Ideas	03	72%	68%	65%	Integration of Knowledge & Ideas	04	78%	74%	71%
Total	40				Total	40			

<i>Grade 11 (n=58)</i>				
<i>Domain</i>	<i># of Points</i>	<i>Percent Correct</i>		
		<i>District</i>	<i>AEA</i>	<i>Iowa</i>
Key Ideas & Details	24	67%	65%	62%
Craft & Structure	12	72%	69%	67%
Integration of Knowledge & Ideas	04	67%	60%	58%
Total	40			

Table 3
Domain Performance in Mathematics on the Iowa Core: Grades 3-8
West Branch: 2013-2014

Iowa Core: Mathematics									
Grade 3 (n=56)					Grade 4 (n=53)				
Domain	# of Points	Percent Correct			Domain	# of Points	Percent Correct		
		District	AEA	Iowa			District	AEA	Iowa
Operations & Algebraic Thinking	14	58%	61%	64%	Operations & Algebraic Thinking	17	61%	68%	69%
Number & Operations in Base 10	06	53%	57%	59%	Number & Operations in Base 10	08	56%	66%	65%
Number & Operations - Fractions	02	60%	66%	69%	Number & Operations - Fractions	02	59%	64%	62%
Measurement & Data	22	60%	60%	64%	Measurement & Data	22	62%	69%	70%
Geometry	06	51%	53%	56%	Geometry	06	55%	56%	56%
Total	50				Total	55			
Grade 5 (n=79)					Grade 6 (n=59)				
Domain	# of Points	Percent Correct			Domain	# of Points	Percent Correct		
		District	AEA	Iowa			District	AEA	Iowa
Operations & Algebraic Thinking	15	65%	68%	66%	Ratios & Proportional Relationships	05	51%	51%	50%
Number & Operations in Base 10	11	59%	63%	61%	The Number System	19	59%	62%	61%
Number & Operations - Fractions	02	54%	58%	56%	Expressions & Equations	09	61%	64%	63%
Measurement & Data	23	68%	70%	69%	Geometry	14	60%	58%	58%
Geometry	09	57%	57%	57%	Statistics & Probability	09	65%	63%	62%
Total	60				Mathematical Practice, Measurement	09	70%	71%	70%
					Total	65			
Grade 7 (n=65)					Grade 8 (n=66)				
Domain	# of Points	Percent Correct			Domain	# of Points	Percent Correct		
		District	AEA	Iowa			District	AEA	Iowa
Ratios & Proportional Relationships	09	68%	63%	62%	The Number System	16	62%	60%	61%
The Number System	17	63%	63%	62%	Expressions & Equations	20	65%	63%	62%
Expressions & Equations	10	64%	65%	62%	Functions	02	53%	51%	50%
Geometry	15	57%	54%	52%	Geometry	17	53%	52%	51%
Statistics & Probability	10	63%	52%	50%	Statistics & Probability	12	67%	64%	63%
Mathematical Practice, Measurement	09	76%	72%	70%	Mathematical Practice, Measurement	08	55%	57%	55%
Total	70				Total	75			

Table 4
Domain Performance in Mathematics on the Iowa Core: Grades 9-11
West Branch: 2013-2014

<i>Iowa Core: Mathematics</i>									
<i>Grade 9 (n=56)</i>					<i>Grade 10 (n=57)</i>				
<i>Domain</i>	<i># of Points</i>	<i>Percent Correct</i>			<i>Domain</i>	<i># of Points</i>	<i>Percent Correct</i>		
		<i>District</i>	<i>AEA</i>	<i>Iowa</i>			<i>District</i>	<i>AEA</i>	<i>Iowa</i>
Number & Quantity	17	54%	52%	50%	Number & Quantity	14	59%	55%	52%
Algebra	07	47%	53%	48%	Algebra	09	62%	58%	53%
Functions	02	62%	59%	56%	Functions	02	56%	56%	51%
Geometry	08	55%	53%	50%	Geometry	08	61%	56%	52%
Statistics & Probability	06	63%	57%	54%	Statistics & Probability	07	62%	59%	56%
Total	40				Total	40			

<i>Grade 11 (n=58)</i>				
<i>Domain</i>	<i># of Points</i>	<i>Percent Correct</i>		
		<i>District</i>	<i>AEA</i>	<i>Iowa</i>
Number & Quantity	12	60%	55%	52%
Algebra	10	66%	60%	55%
Functions	02	47%	49%	43%
Geometry	08	56%	52%	47%
Statistics & Probability	08	66%	63%	59%
Total	40			

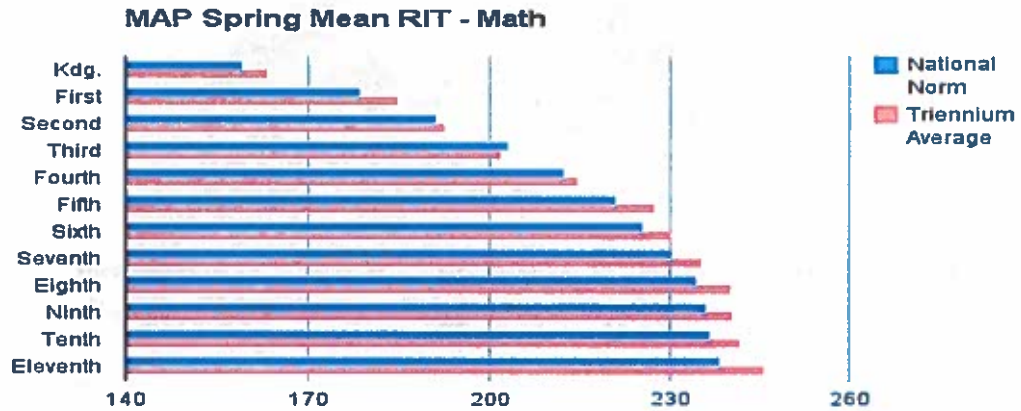


District Achievement & Building Climate Improvement Targets SIAC / Administrative established October, 2014

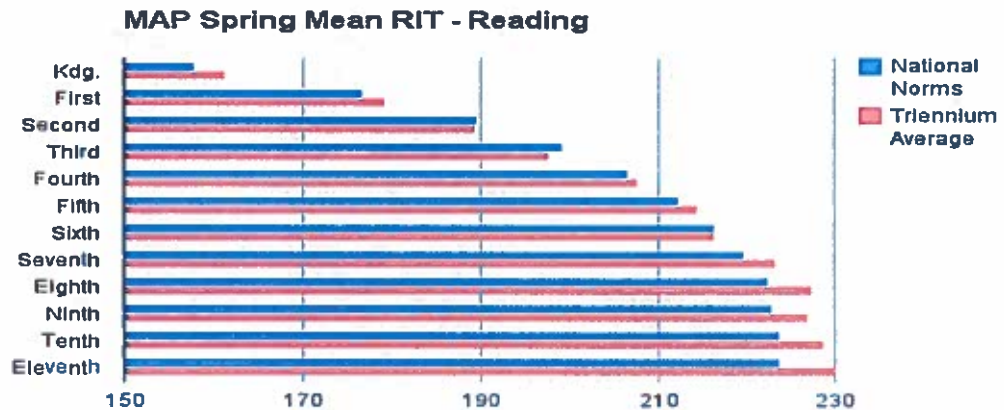
Iowa DE Attendance Center Rankings (ACR) will become embedded in this report

The Attendance Center Ranking (ACR) requirements were established by House File (HF) 215 of the 2013 legislative session. Section 73 of HF 215 required the Iowa Department of Education to develop a school performance system and report card for all attendance centers. The goal of this legislation is to establish specific performance goals and evaluate the effectiveness of each attendance center toward meeting these outcomes.

- By 2017, **100%** of students will exit 3rd grade reading on grade level as measured by *FAST*. Summer programming will be in place for any student not reaching this target.
Baseline: Using 2014 spring *FAST* data is 65% of students.
Baseline: Using year-end report card standards for 2014 is 67% of students
Baseline: Using spring 2014 MAP is 79% of students.
- By 2016, **100%** of adequate yearly progress (AYP) proficiency targets (as established by the Iowa Department of Education) will be met for students in grades 3-11 as measured by the reading, math and science Iowa Assessments.
Baseline: In 2014, the district met 7/9 AYP proficiency targets (78%).
- By 2015 and each proceeding year, **85%** of all students K-4 will meet the grade level target as measured by *FAST*, receiving universal core instruction. 100% of students not meeting the *FAST* grade level target will receive a research based instructional intervention.
Baseline: Spring 2014--56%, fall 2014 - 63%
- The triennium average of Mean RIT scores for each grade level will be greater than the national norm in **Math** according to the MAP assessment.
Baseline: (Mathematics, spring, 2014)



- The triennium average of Mean RIT scores for each grade level will be greater than the national norm in **Reading** according to the MAP assessment.
Baseline: (Reading, spring 2014)



- By 2016, 100% of teachers will use the four Professional Learning Community (PLC) questions to analyze student achievement data:
 - What do we expect our students to learn? (standard)
 - How will we know if they have learned it? (evidence)
 - How will we respond when they don't learn? (intervention)
 - How will we respond if they already know it? (intervention)

Baseline: District administration will lead and monitor for 100% fidelity regarding common PLC implementation. The district is using 2013, 2014 and 2015 to train staff and define PLC protocols and processes.

- By 2019, the district will reduce missed hours of instructional time due to disruptive behavior by 50% by reducing 10% each year.

Baseline: Teacher / Instructional Time Lost:

2014-2015 Lost Instructional Time	Target: Desired 10% reduction spring 2015	2013-2014	2012-2013	Building
	(3105)	3450	1620	Hoover Elem.
	(810)	900	*360	WBMS
	(4050)	4500	5040	WBHS
	(7965)	8850	7020	Total

- By 2019, the district will reduce office referrals by 15% (annual benchmark of 3-5% reduction). The GWAEA Behavior Management DE Report will be the source for this data.

Baseline: Number of Office Referrals:

2014-2015 Office Referrals	Target: Desired 10% reduction Spring 2015	2013-2014	2012-2013	Building
	(102)	115	54	Hoover Elem.
	(27)	30	*12	WBMS
	(135)	150	168	WBHS
	(265)	295	234	Total

- The West Branch Community School District will increase graduation rates (using 4 year & 5 year state calculations) to 98-100 % for 4 year and 98-100% for 5 year students using 2015, 2016 and 2017 graduation rate percentages.

Baseline: Three year average using 2012, 2013 and 2014 are:

- 4 Year Cohorts 97.6 %
- 5 Year Cohorts 96.7%

- The West Branch Community Schools will increase our five year ACT Composite average from 22.2 to 23.5 by 2017.

Baseline: The district's 2014 ACT Composite was 21.4 while the 2014 state average is 22.0. The highest WBHS ACT Composite average for the past five years was the class of 2011 at 23.3.

- The West Branch Community School will increase the number of students “college ready” by 10% by 2017, using ACT College-Readiness data.
Baseline: 27% of the Class of 2014 who took the ACT met ACT's college readiness definition while the state average was 31%.
- The West Branch Community School District will improve the overall percentage sub-group students (including females) enrolled in CTE and PLTW / STEM courses will increase by 10% by the 2017 school year.
Baseline: 2014 Course enrollment data
 - Project Lead The Way/ STEM: Total 31 enrolled, 4F, 27M, 4 CTE strands
 - Health Careers: Total 10 enrolled 8F, 2M
 - FCS: Total 16 enrolled 14F, 2M
 - Industrial Technology: Total 23 enrolled 1F 22M
 - Agriculture Education: Total 64 enrolled 29F 35M
- The West Branch Community School District will track trend line data regarding *Senior Exit Survey* responses, as well as the responses of *Postgraduate WBCSD survey* perceptions of students regarding of the career and post-secondary education plans and preparation they received while attending our district.
Baseline:

Key / Lead Survey Indicators Senior Exit Survey

*Multiple choices allowed may not = 100%

Survey Question – Current Status?	Senior Exit 2013(63)	Senior Exit 2014 (67)	Senior Exit 2015 (N)
4 Year	63.49	40.30	
2 Year	33.33	44.78	
Voc / Tech	0	0	
Full-time	4.76	10.45	
Part-time	11.11	14.93	
Apprenticeship / Internship	0	0	
Military	6.25	0	
Other	0	0	
No Response	0	0	

Key / Lead Survey Indicators Postgraduate Data

*Multiple choices allowed may not = 100%

Survey Question – Current Status?	Postgraduate 2011 (20 responses)	Postgraduate 2012 (16 responses)	Postgraduate 2013 (N)
4 Year	83.33	45.83	
2 Year	29.17	22.50	

Voc / Tech	0	0	
Full-time	29.17	16.67	
Part-time	45.83	37.5	
Apprenticeship / Internship	6.0	0	
Military	0	0	
Other	0	0	
No Response	0	0	

Additional "Key Indicator Survey Data" will be available in the District's Strategic Plan. The WBCSD will add State of Iowa post-graduate data when available.

Dear Superintendent Kevin Hatfield,

West Branch

The Iowa Department of Education (DE) will publicly release graduation and dropout rates during the week of March 23, 2015. This information is embargoed and cannot be released publicly until after the Department releases the rates. An exact date/time will be sent to you Monday March 23. This information is being released to districts early as a courtesy so you can preview your results prior to the release date.

Graduation Rates:

Iowa continues to report 4 year and 5 year cohort graduation rates to reflect the work districts and schools put forth in helping all students earn diplomas. Iowa has adopted 4 year and 5 year cohort graduation rate methodology in accordance with federal requirement 34 CFR 200.19(b)(1)(i).

The 4 year cohort graduation rate is calculated for the class of 2014 by dividing the number of students in the cohort who graduate with a regular high school diploma (numerator) in four years or less by the number of first-time 9th graders enrolled in the fall of 2010 minus the number of students who transferred out plus the total number of students who transferred in (denominator).

The 5 year cohort graduation rate is calculated for the class of 2013 using a similar methodology as the four-year cohort rate. This rate is calculated by dividing the number of students in the cohort who graduate with a regular high school diploma (numerator) in five years or less by the number of first-time 9th graders enrolled in the fall of 2009 minus the number of students who transferred out plus the total number of students who transferred in (denominator).

If you don't find your district information in this letter, one of the following situations may apply:

a) there are no active students during this period or b) denominator is less than 10.

District High School Status: High School

District Graduation Rates:

2014 class 4 year cohort graduation rate: 88.57%

2013 class 5 year cohort graduation rate: 98.51%

Statewide Graduation Rates:

2014 class 4 year cohort graduation rate: 90.5%

2013 class 5 year cohort graduation rate: 92.3%

Dropout Rates:

The dropout window for a school year begins on certified enrollment count day (October 1, 2013) of that school year and ends on the day before certified enrollment count day the

following year (September 30, 2014).

District 7-12 Enrollment Status: Grade 7-12

District Dropout Rates:

Number of grade 7-12 dropouts in 2013-14: 3

Number of grade 9-12 dropouts in 2013-14: 3

Grade 7-12 dropout rate in 2013-14: 0.79%

Grade 9-12 dropout rate in 2013-14: 1.20%

Statewide Dropouts:

The statewide dropout rate for grades 7-12 for 2013-14: 1.84%

The statewide dropout rate for grades 9-12 for 2013-14: 2.70%

The DE has also loaded these data into EdInsight for further analysis. EdInsight is the DE's reporting and analytics tool (<https://portal.ed.iowa.gov>). More information about the EdInsight application can be found here <https://www.educateiowa.gov/data-reporting/edinsight-data-warehouse>. Data will also be posted after the embargoed date/time on the DE Website under Education Statistics, Student Performance section.

You may contact Dr. Xiaoping Wang before Tuesday, March 17, 2015 at xiaoping.wang@iowa.gov or (515) 242-5986 with any questions.

Sincerely,

Jay Pennington, Bureau Chief

Bureau of Information and Analysis Services

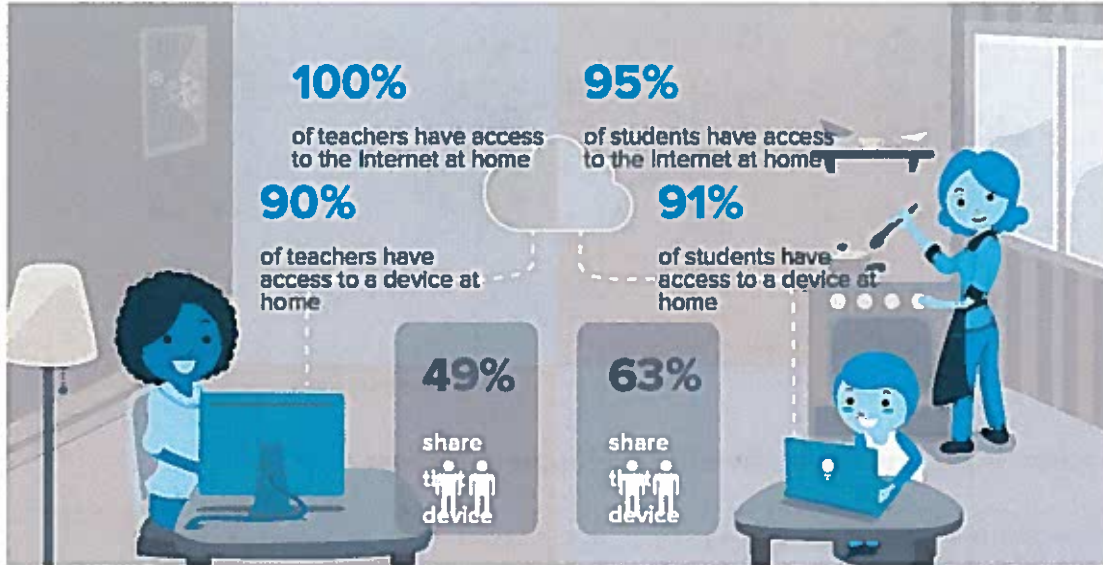
Iowa Department of Education Grimes State Office Building

400 E. 14th Street

Des Moines, Iowa 50319-0146

WBCSD Clarity/Bright Bytes Survey Infographics - February 2015

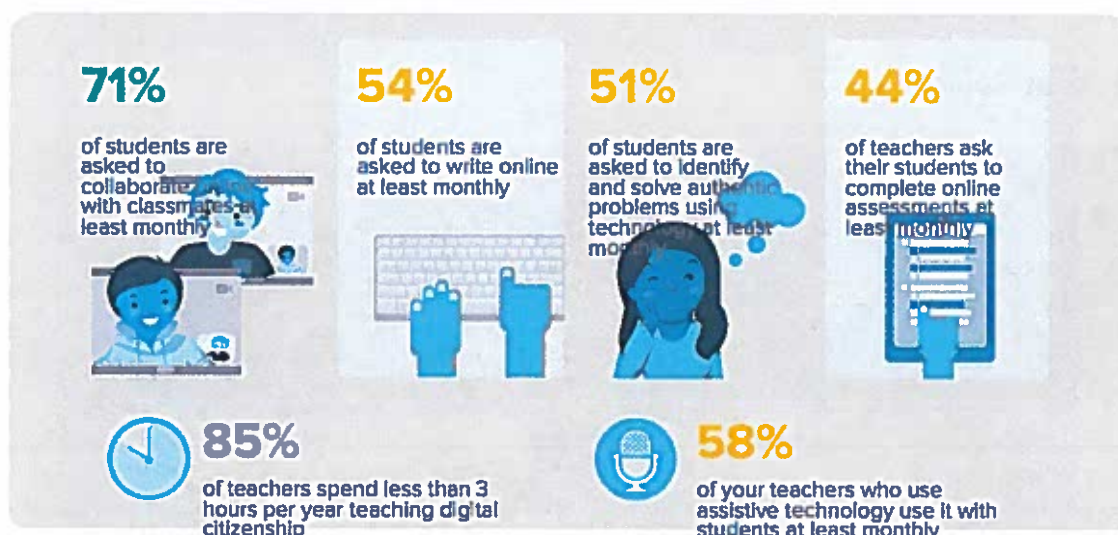
Access at Home:



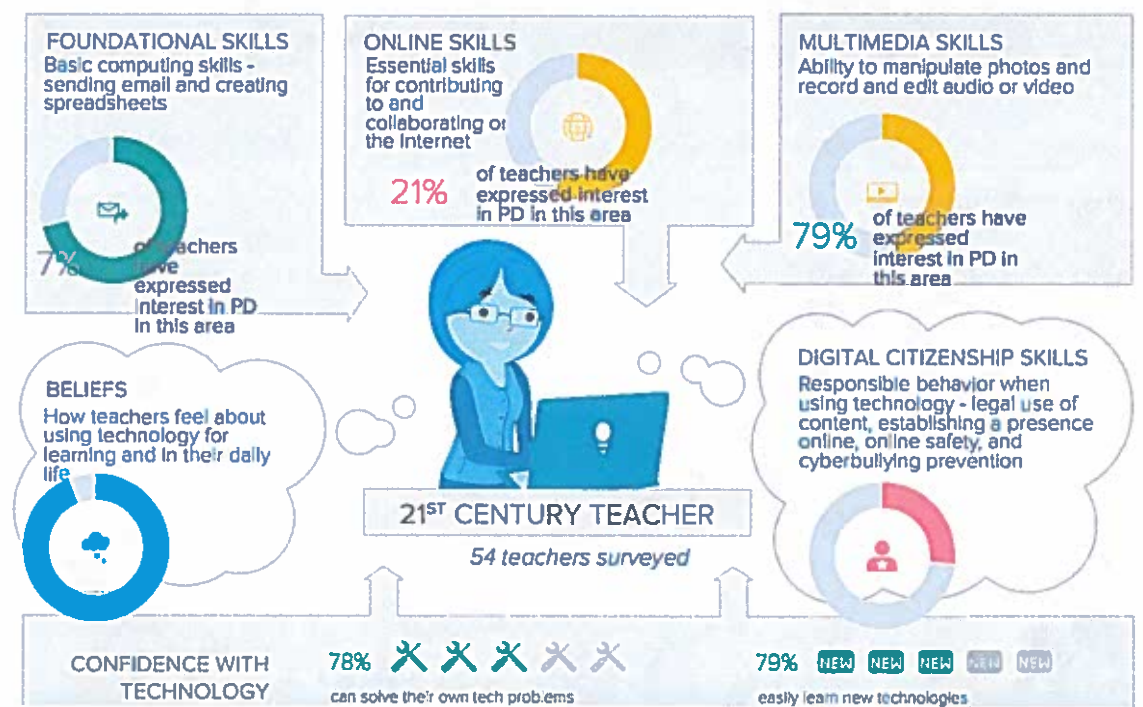
Access at School:



Use of Technology in the Classrooms:



Teacher Skills and Professional Development Needs:



Next Steps for WBCSD:

- 0 Differentiate professional development according to ability
- 0 Establish a common language re: digital citizenship district-wide
- 0 Increase availability of personal devices at elementary level